



Saylom Village, Luang Prabang District, Luang Prabang Province

Listing number: **WGF2757**

Listing date: **2015-09-03**

[View on wegofa.com](http://www.wegofa.com)



Land on Mekong in Luang Prabang

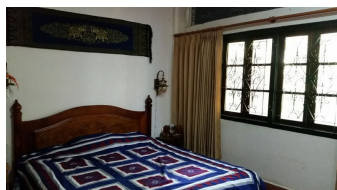


Agent Details



SUNLAY SIPRASEUTH

Mobile: +856 20 2389 9999



About this property

Probably the last Mekhong property of its kind in or near Luang Prabang. Very large lot directly on the river (no road separating you from the river like on the peninsula) with absolutely no development on the opposite shore. It is located just outside the "heritage zone" so it can be developed as you wish with no restrictions. Less than 5 minutes from the city center near Talat Phosy and easy access to the main road, but at the quiet and private end of a small soi opposite the OckPokTok "Living Craft Centre".



It is the perfect location to develop a small high-end resort or build the Southeast Asia villa of your dreams. The river is approximately 500 meters wide and in dry season the beach adjoining the property extends about 2/3 of the way across the river making you feel like you are on an island near the sea instead of in landlocked Laos. You can also develop past the marked land line toward the river and use the additional land in dry season as you wish.



There are stunning sunset views over the river and distant mountains year round. Includes 3Br/3Ba house with large covered porch, a large hilltop saala and large tropical garden. Please come to look before discussing price. Extremely motivated to sell and open to offers (but not desperate or stupid



To book a premium property advertising product contact your real estate agent.

If you are an agent:

Call: +856 20 2389 9999

Email: orders@wegofa.com



**Saylom Village, Luang Prabang
District, Luang Prabang Province**

Listing number: **WGF2757**
Listing date: **2015-09-03**
[View on wegofa.com](http://wegofa.com)

Property Listed: 2015-09-03

Total Viewings: 1



