



## Pakthang Village ,Sikhottabong District,Vientiane Capital

Listing number: **WGF799**

Listing date: **2015-07-31**

[View on wegofa.com](http://www.wegofa.com)



Unit for Sale



### Agent Details



**SUNLAY SIPRASEUTH**

Mobile: +856 20 2389 9999



### About this property

#### Unit for sale in Sikhottabong district, Vientiane capital

Are you looking for pretty shop house with cheap price? A two-storey shop house is located in Sikhottabong district, Vientiane capital. It consists a total living area of 104 sq. m. and a total area is 80 sq. m. This nice location provides a good environment and safe community. The infrastructure of the area is very good, nearby are placed the restaurant, hotel, gasoline station, school, bank, market and etc. The shop house is solidly constructed; it offers 3 bedrooms, 3 bathrooms, balcony and a comfortable interior design. The property enjoys a high quality of the construction and finishing works.

#### Why buy this shop house

- Situated in the developed village
- Offers with nice design, good layout, suitable for permanent living.
- Provides the comfortable facilities including water supply, electricity and etc
- Close to the public facilities
- Surrounded by fence
- High quality construction with excellent materials.

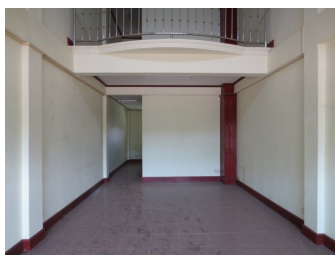
If you decide to sell it, please contact with our company to get more information!

To book a premium property advertising product contact your real estate agent.

If you are an agent:

**Call:** +856 20 2389 9999

**Email:** [orders@wegofa.com](mailto:orders@wegofa.com)





**Pakthang Village ,Sikhottabong  
District,Vientiane Capital**

Listing number: **WGF799**  
Listing date: **2015-07-31**  
[View on wegofa.com](http://wegofa.com)

**Property Listed:** 2015-07-31

**Total Viewings:** 1

